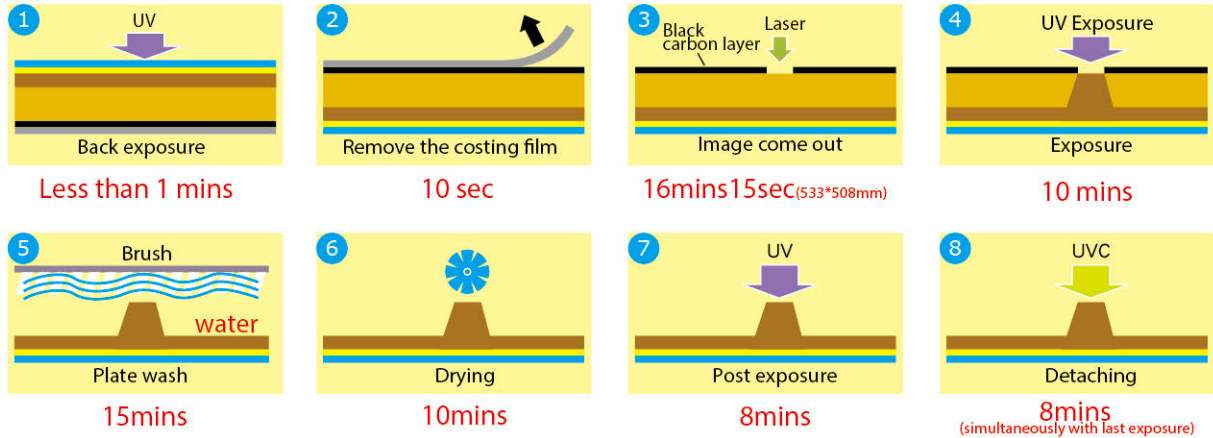




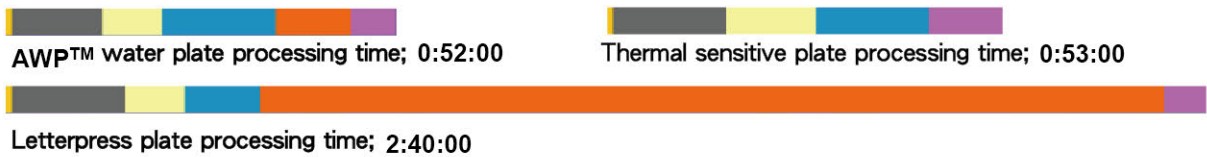
## AWP water-washable CTP

### Water-washable CTP flexographic processing

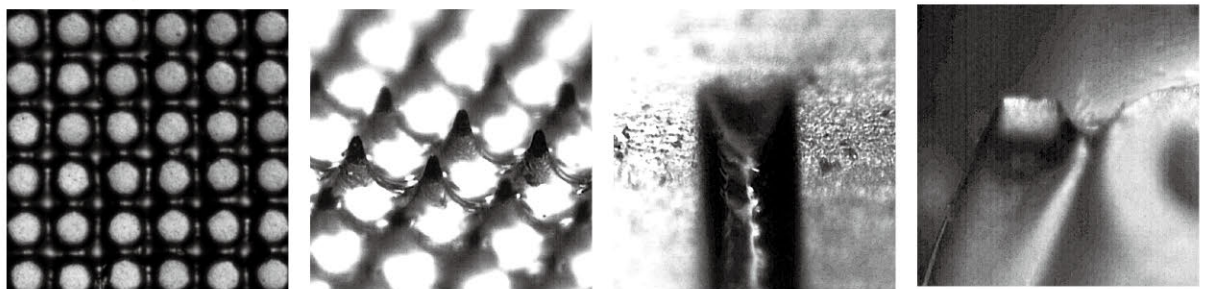


**Prepare time less than 1 hour.**

### Different types of flexographic, plate-making time comparison:



### Plate expression



Dots average

Small dot slope is small

Anti-white line depth  
(line width : 300µm, depth:280µm)

Isolated dot  
(dot width : 180µm, depth : 200µm)

### Specification

Water-washable CTP	Type	Thickness /mm	Hardness (shore D)	K-factor	Dots reproduction (175L)	Narrowest line /µm	Minimum isolated dot /µm
	AWP-DEF 1.14	1.14	77	5.98	1-98%	80	150
	AWP-DEF 1.70	1.70	70	9.89	1-98%	80	150

