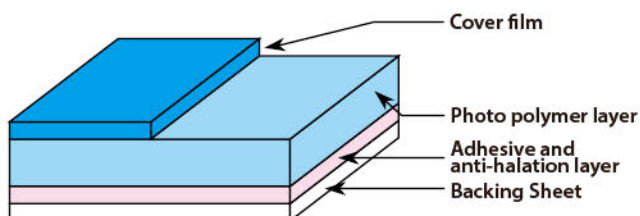


'TORAY' TORELIEF



Letterpress Plate/CTP

Letterpress plate structure



- ◆ Water washable, Environment
- ◆ Inks average, good quality
- ◆ Good screen and solid evenness、image reproducibility、line out
- ◆ Excellent printing durability
- ◆ Simple plate-making, large exposure time

Basic Structure of TORELIEF CTP

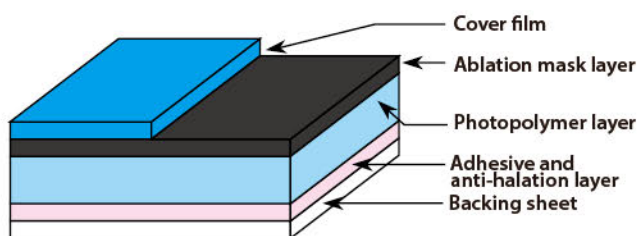
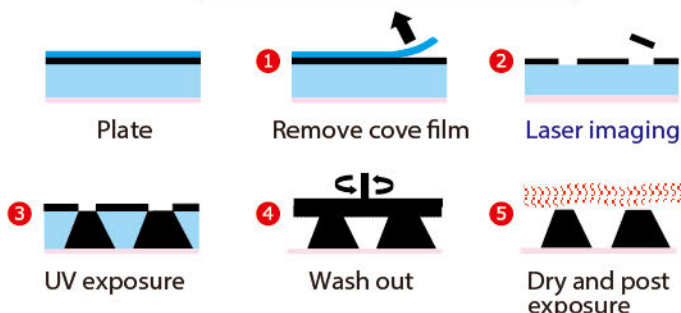


Plate making process



CTP can deeper reverse image

DWF95NM



100μm

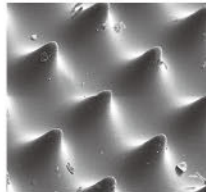
WF95DY3



100μm

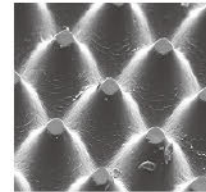
CTP had sharp dot & finer halftone image

DWF95NM 1%



100μm

WF95DY3 1%



100μm

PRINTING OUTLINE: Prefect subtle dot, easy to control enlarged printing dot.

TORAY DWF95DIII	Other brand	TORAY DWF95DIII	Other brand
0.8%	0.8% 网点丢失	1%	1% 扩大严重

TORELIEF SPECIFICATIONS

New **YSE** Type

Water-washable CTP

Low cost and High efficiency

	Type	Base material	Thickness mm(inch)	Relief mm(inch)	Hardness	Relief Reproduction		
						HalfTone	Narrowest Line (μm)	Minimum isolated dot (μm)
Letterpress plate	WF95DY3	Polyester film	0.95(0.037)	0.65(0.026)	55	200lpi 1-95%	40	100
	WF95DHII			65	175lpi 1-95%	40	150	
	WF95DII			55	175lpi 3-95%	40	200	
	WF95CHII			70	175lpi 1-95%	40	150	
	WF95BSIIN			30	150lpi 5-95%	50	200	
	WS95HII	Steel	0.68(0.027)	65	175lpi 1-95%	40	150	
	WS95HY3		0.68(0.027)	65	175lpi 1-95%	40	200	
CTP	DWF 95NM	Polyester film	0.95(0.037)	0.65(0.026)	55	200lpi 1-99%	20	100
	DWF 95DIII							
	DWS 73NM	Steel	0.73(0.029)	0.46(0.018)	65			
	DWS 83NM		0.83(0.033)	0.56(0.022)				
	DWS 95NM		0.95(0.037)	0.68(0.027)				
Water-washable Flexo-plate	WF114YSE	Polyester film	1.14(0.045)	0.55-0.65 (0.022-0.026)	(肖氏A) 76-82	150lpi 2-95%	20	80
	DF114YSE					175lpi 2-95%	20	60
	WF170YSE		1.70(0.067)	0.65-0.75 (0.026-0.030)		150lpi 2-95%	30	120
	DF170YSE					175lpi 2-95%	20	80

PS: Data provide by TORAY



Sevenace Group Co., Ltd.

Rm 2001, Tower B, Fengxing Plaza, 242 Tianhe Road Guangzhou, China
Phone : 020-3810 4770 / Fax : 020-3810 4771